

Solo Tuba

Tuba Mukl

Traditional arr. Christoph Walter
brass band transcription
by Sandy Smith

Samba ♩ = 124

(oberkrayner-style)

14

f

17 **A** samba feel

mf

25

31

36

41 **B**

46

51 (2nd x only)

56 **Fine**

60

Solo Tuba

63 C
mf

68

73

79 D Blues ♩ = 124
3

85

89

95

100 *molto rit.*

105 *quasi Cadenza (free)* C D *D.C. al Fine*

Solo Tuba

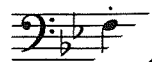
Encore

$\text{♩} = \text{ca. } 90$

poco a poco accel.



Samba $\text{♩} = 124$



diese Stimme ist unvollständig
this part is not complete
cette partie n'est pas complète

Tuba Mukl

Traditional arr. Christoph Walter
brass band transcription
by Sandy Smith

Samba ♩ = 124

(oberkrayner-style)

14 *f*

17 **A** samba feel

2 *mf*

25

31

36

41

2. **B**

46

51

(2nd x only)

56

1. 3 2. 3 **Fine**

60

3

Solo Tuba

63 C
mf

68

73

79 D Blues ♩ = 124
3

85

89

95

100 *molto rit.*

105 *quasi Cadenza (free)* C D *D.C. al Fine*

Solo Tuba

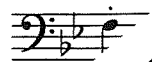
Encore

$\text{♩} = \text{ca. } 90$

poco a poco accel.



Samba $\text{♩} = 124$



diese Stimme ist unvollständig
this part is not complete
cette partie n'est pas complète